

Management Information System



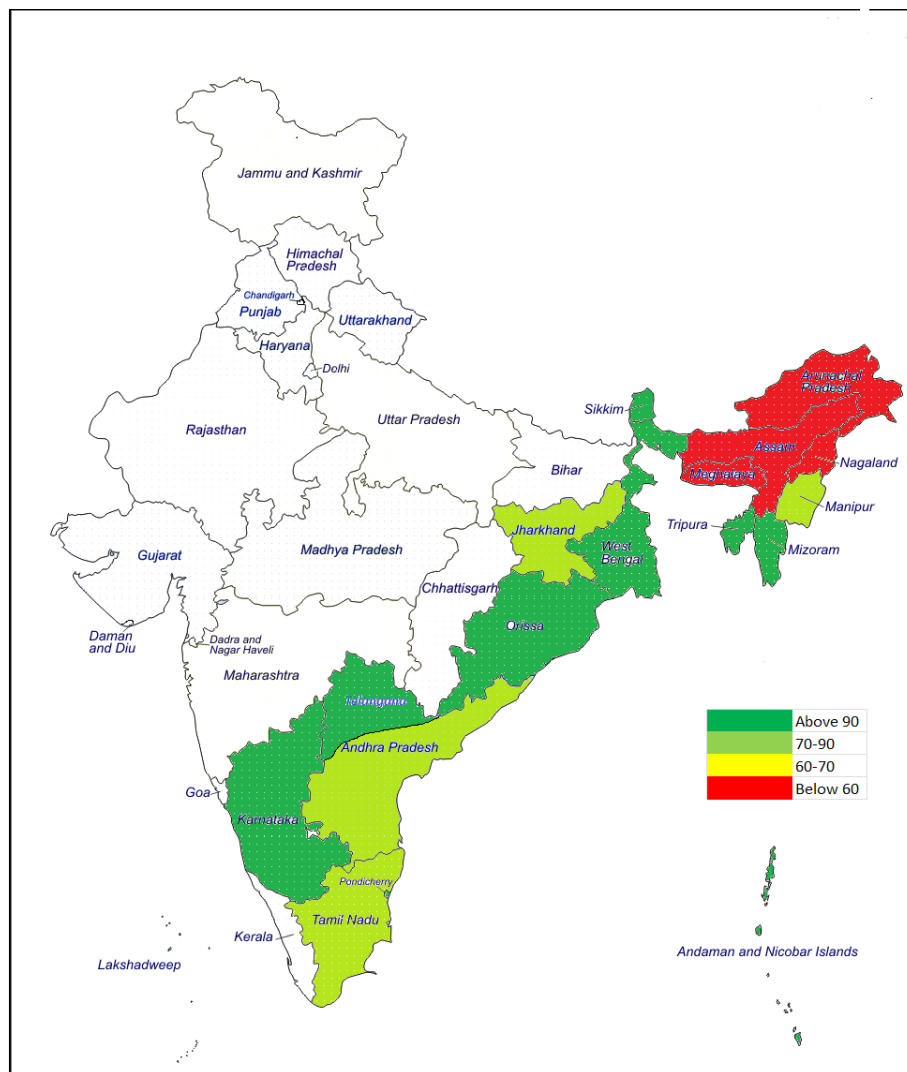
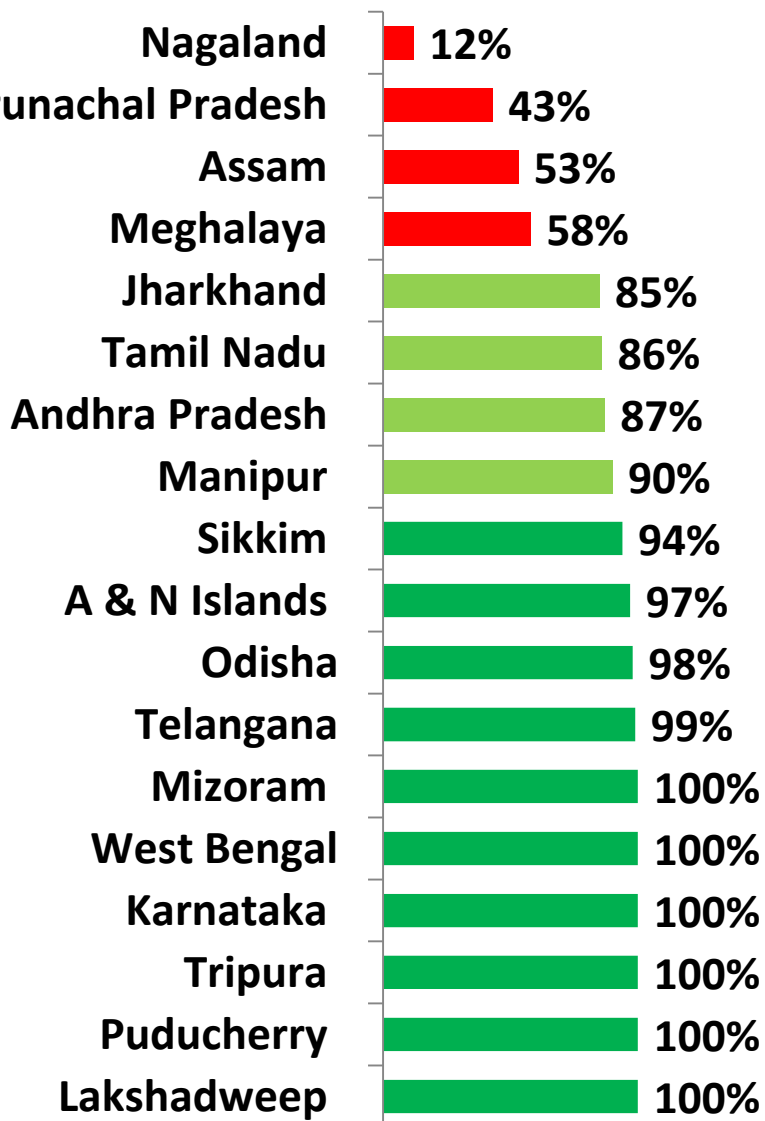
Achievements

- ✓ **Annual data entered for 98% schools in FY 2016-17**
- ✓ **Monthly data (avg.) entered for 94% schools in FY 2016-17**
- ✓ **Availability of database containing valuable micro and macro level data for Financial Year 2012-13 to 2016-17.**
- ✓ **Availability of offline data entry module for blocks/districts with poor internet connectivity**
- ✓ **Auto generation of Annual Work Plan & Budget reports**
- ✓ **Access of crucial reports to users at Centre, State, District and Block for timely intervention**

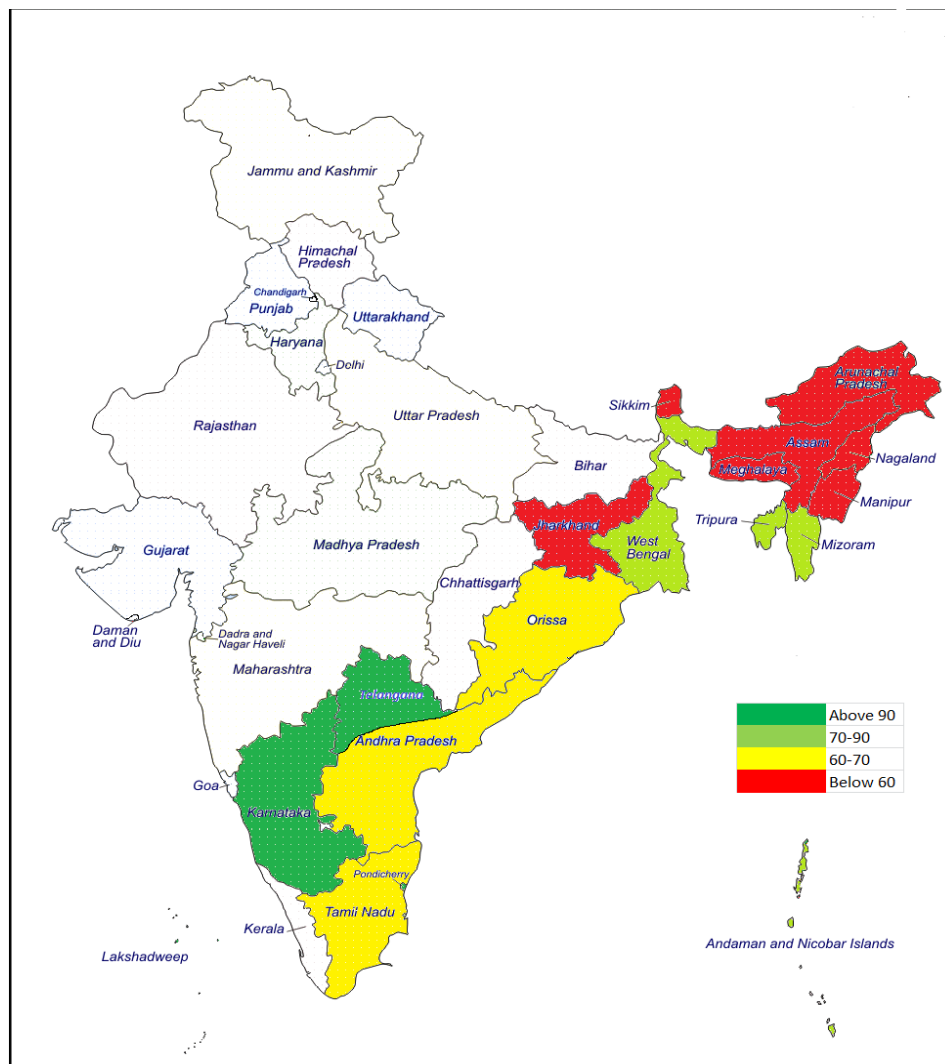
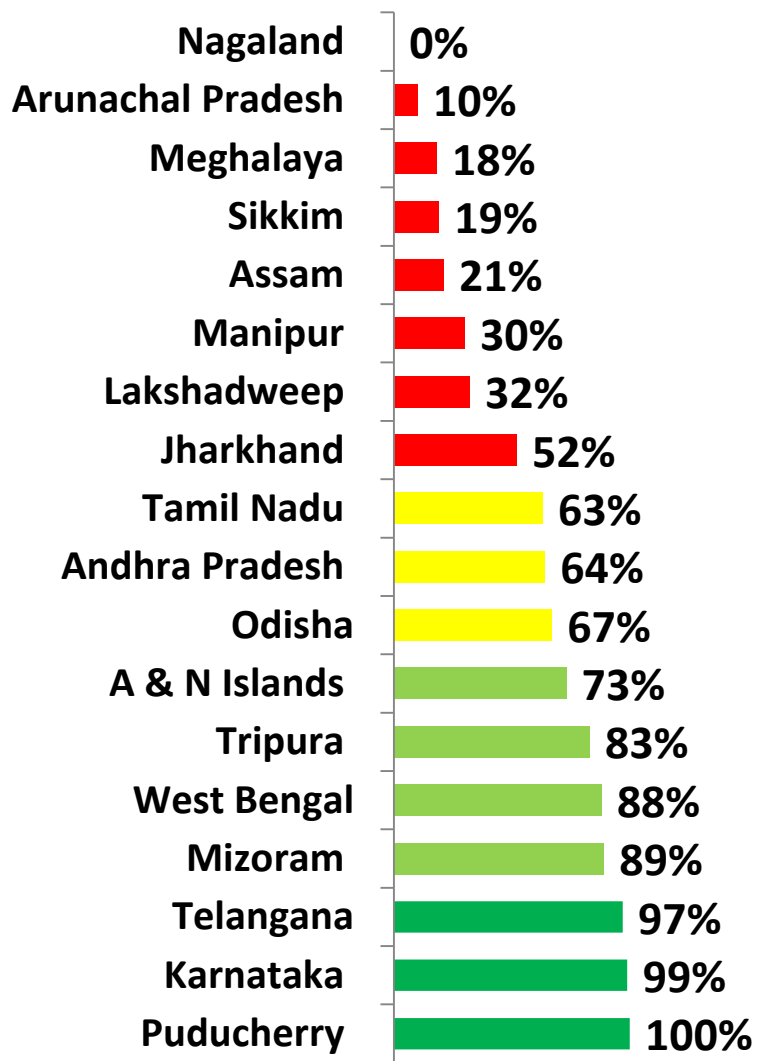
Areas of concern

- **Timely entry of data into portal**
- **Quality of data entry into portal need to be closely monitored**
- **Need for utilization of MIS data for monitoring and planning purposes**
- **Submission of Annual Work Plan & Budget through MIS**

Annual Data Entry Status: 2017-18



Monthly Data Entry Status (Apr-Sep): 2017-18

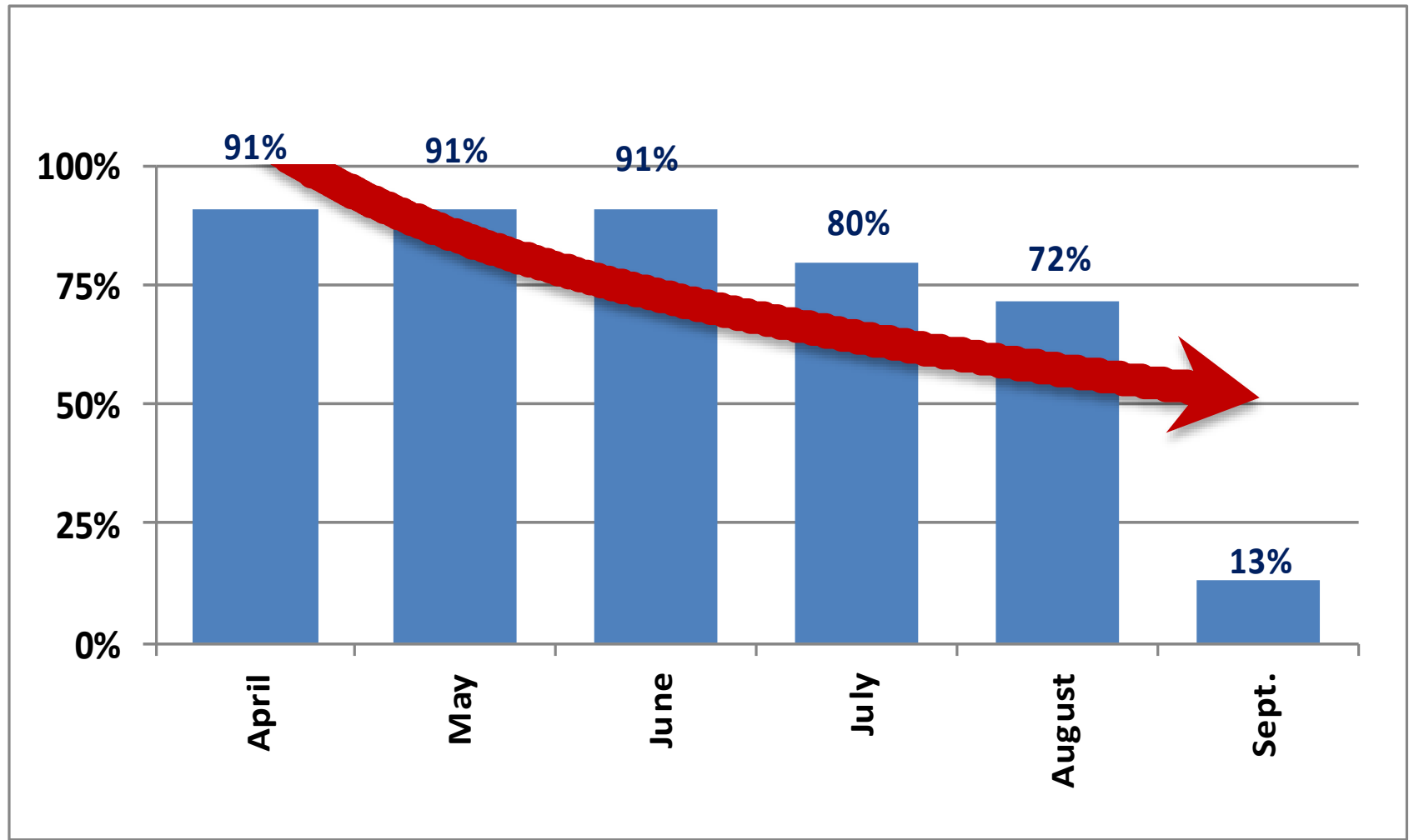


Analysis of Data..



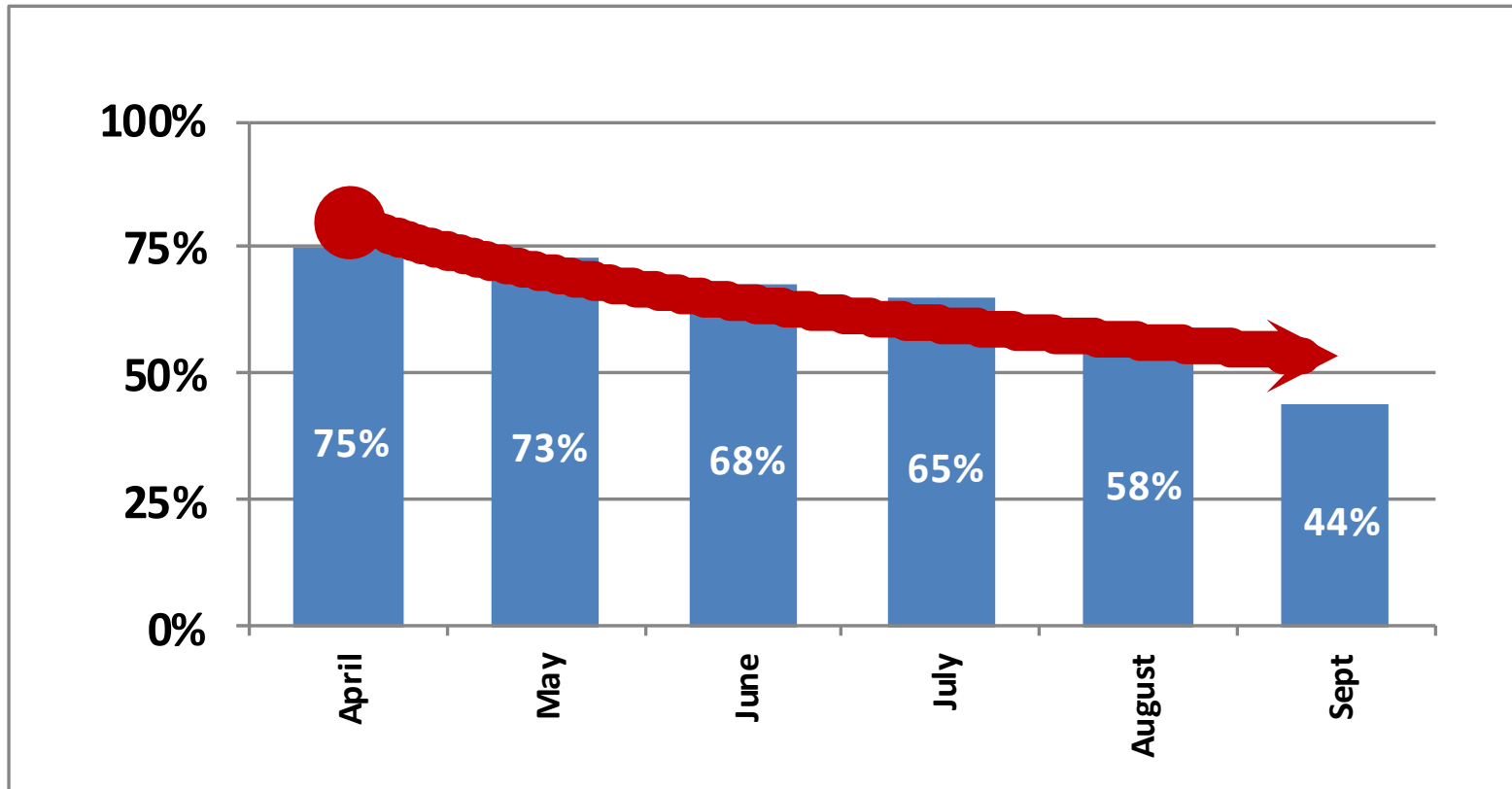
Month-wise Data Entry Status: A & N Islands

73%: Average Monthly Data Entry – A & N Islands (Apr-Sep 2017)



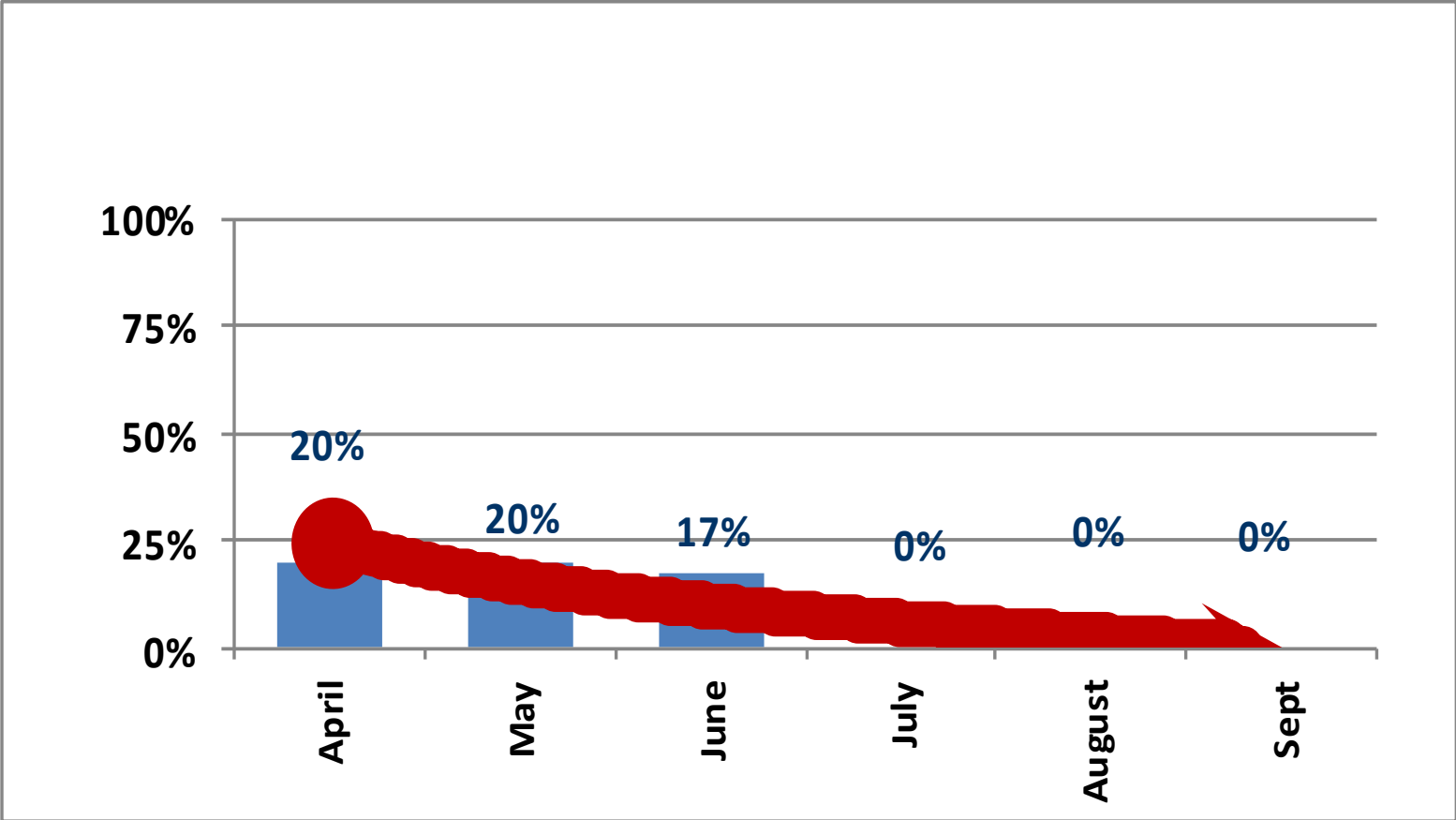
Month-wise Data Entry Status: Andhra Pradesh

64%: Average Monthly Data Entry Andhra Pradesh (Apr-Sep 2017)



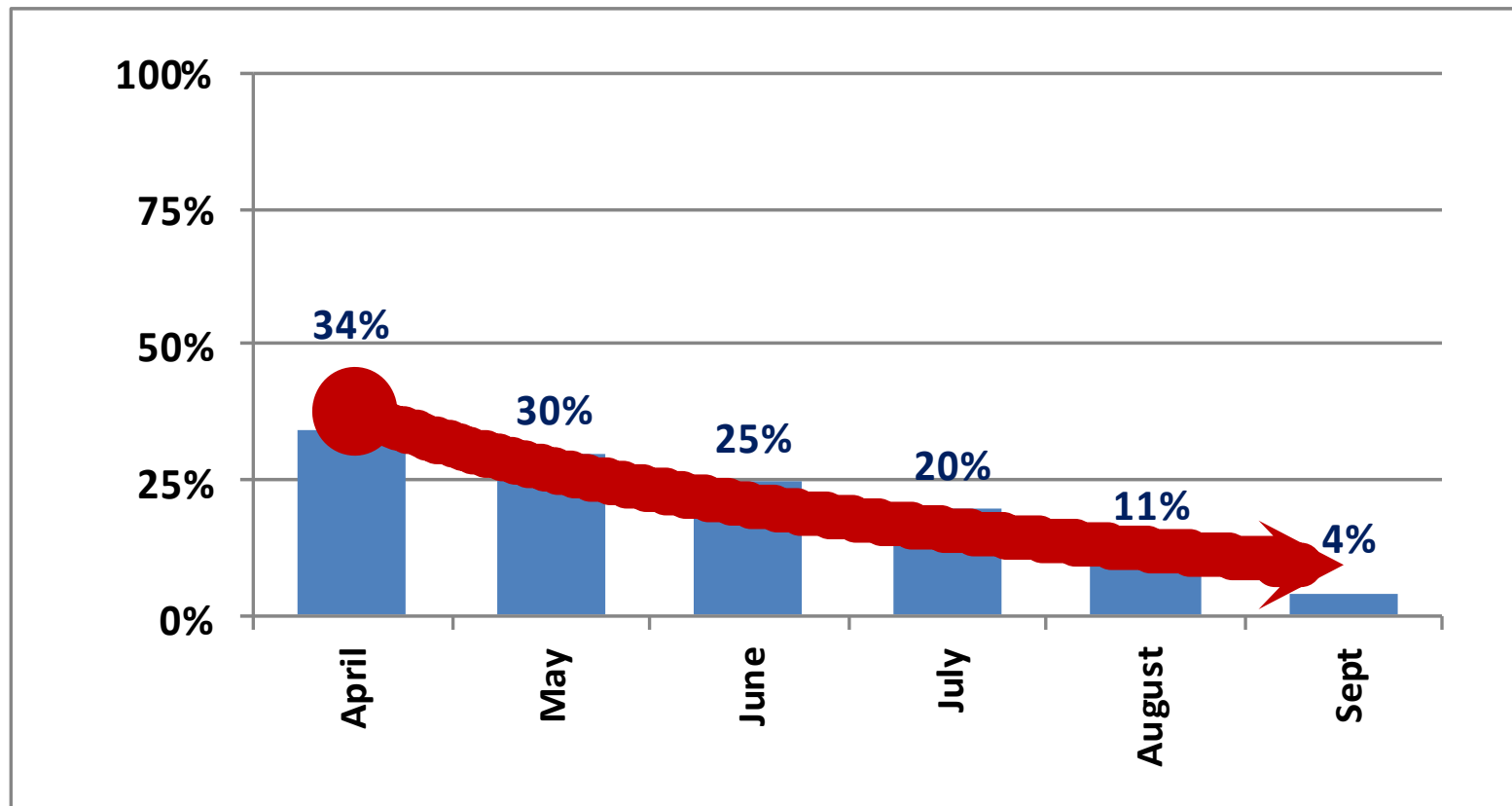
Month-wise Data Entry Status: Arunachal Pradesh

10%: Average Monthly Data Entry Arunachal Pradesh (Apr-Sep 2017)



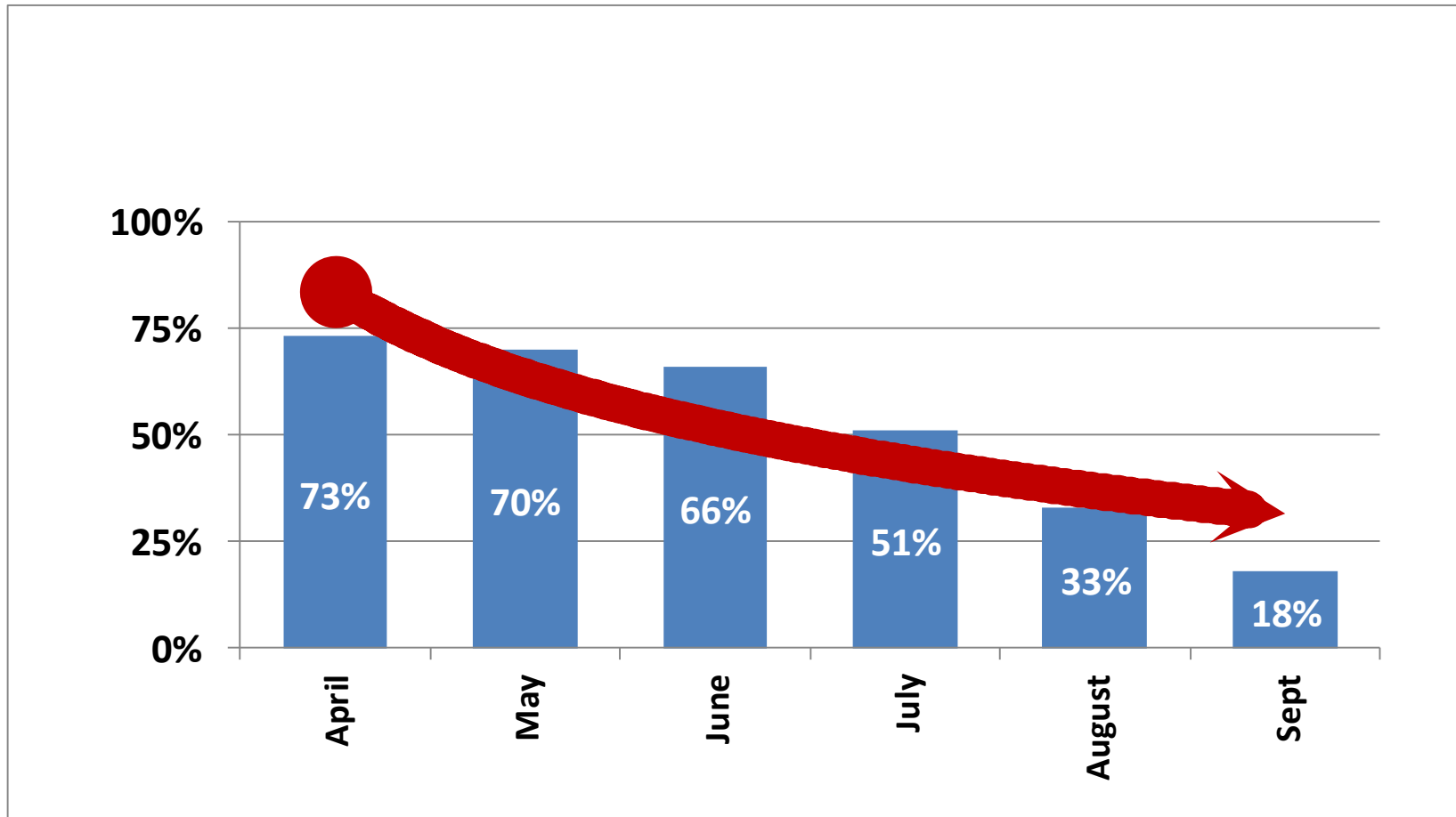
Month-wise Data Entry Status: Assam

21%: Average Monthly Data Entry Assam (Apr-Sep 2017)



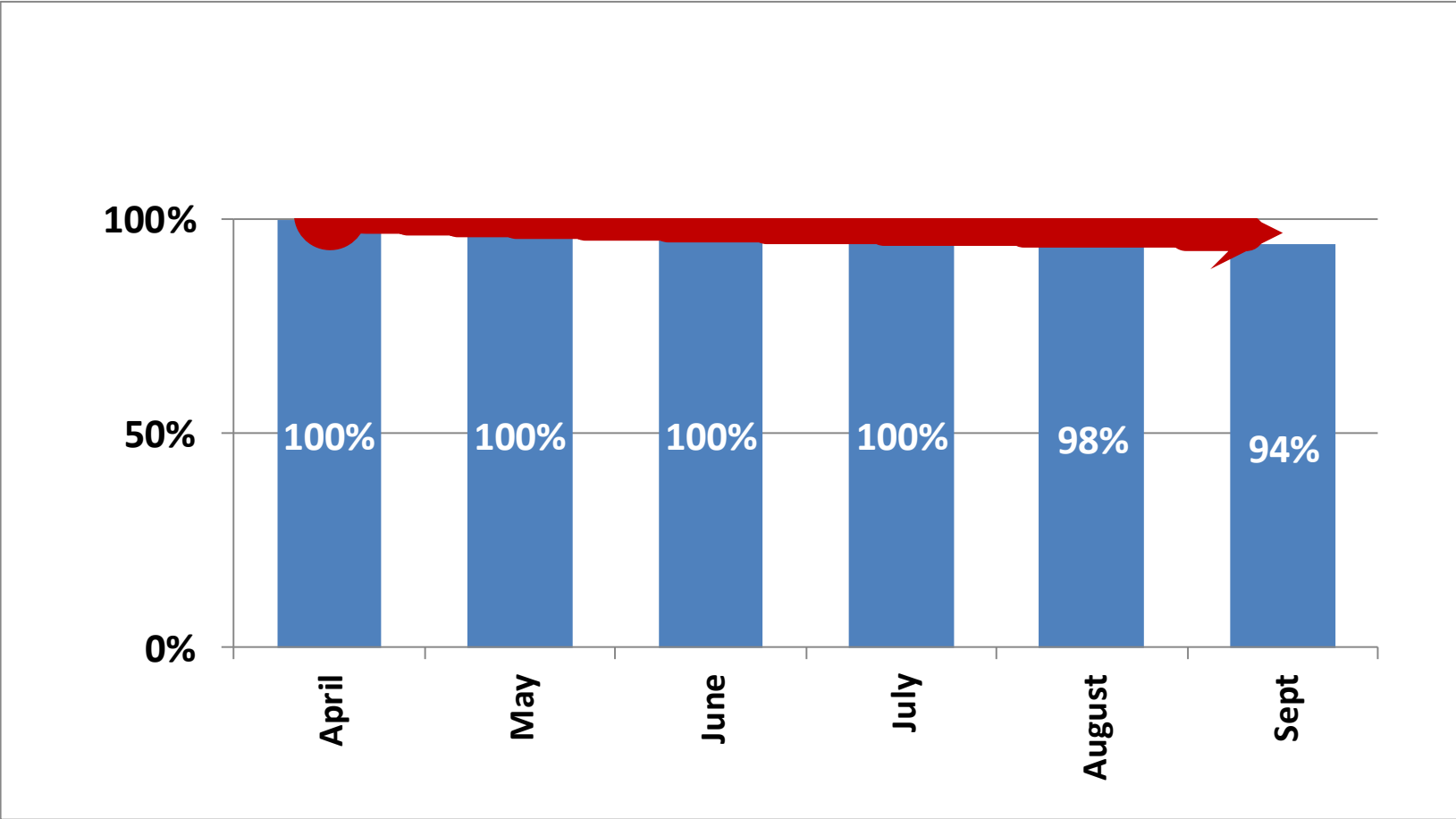
Month-wise Data Entry Status: Jharkhand

52%: Average Monthly Data Entry Jharkhand (Apr-Sep 2017)



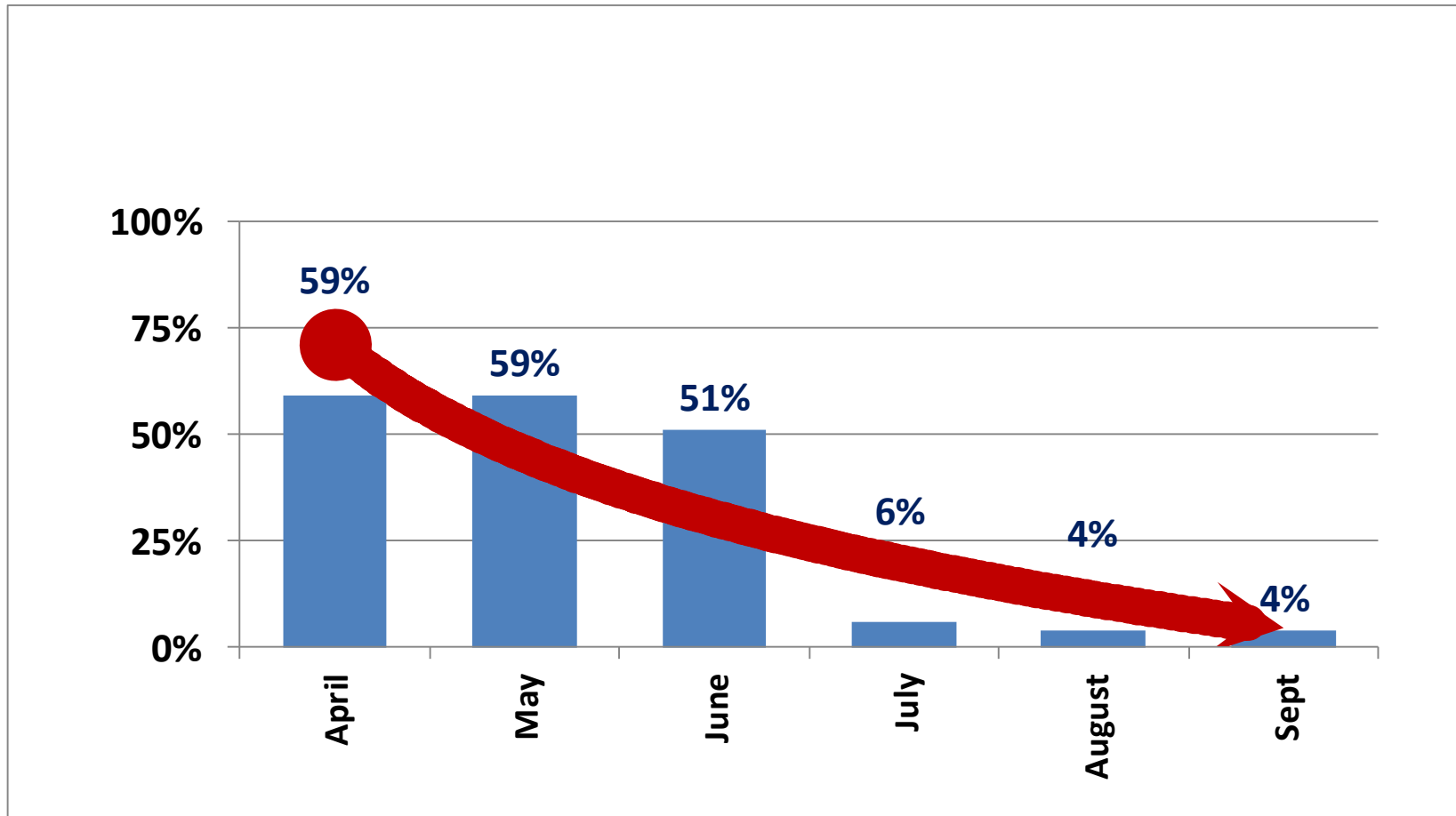
Month-wise Data Entry Status: Karnataka

99%: Average Monthly Data Entry Karnataka (Apr-Sep 2017)



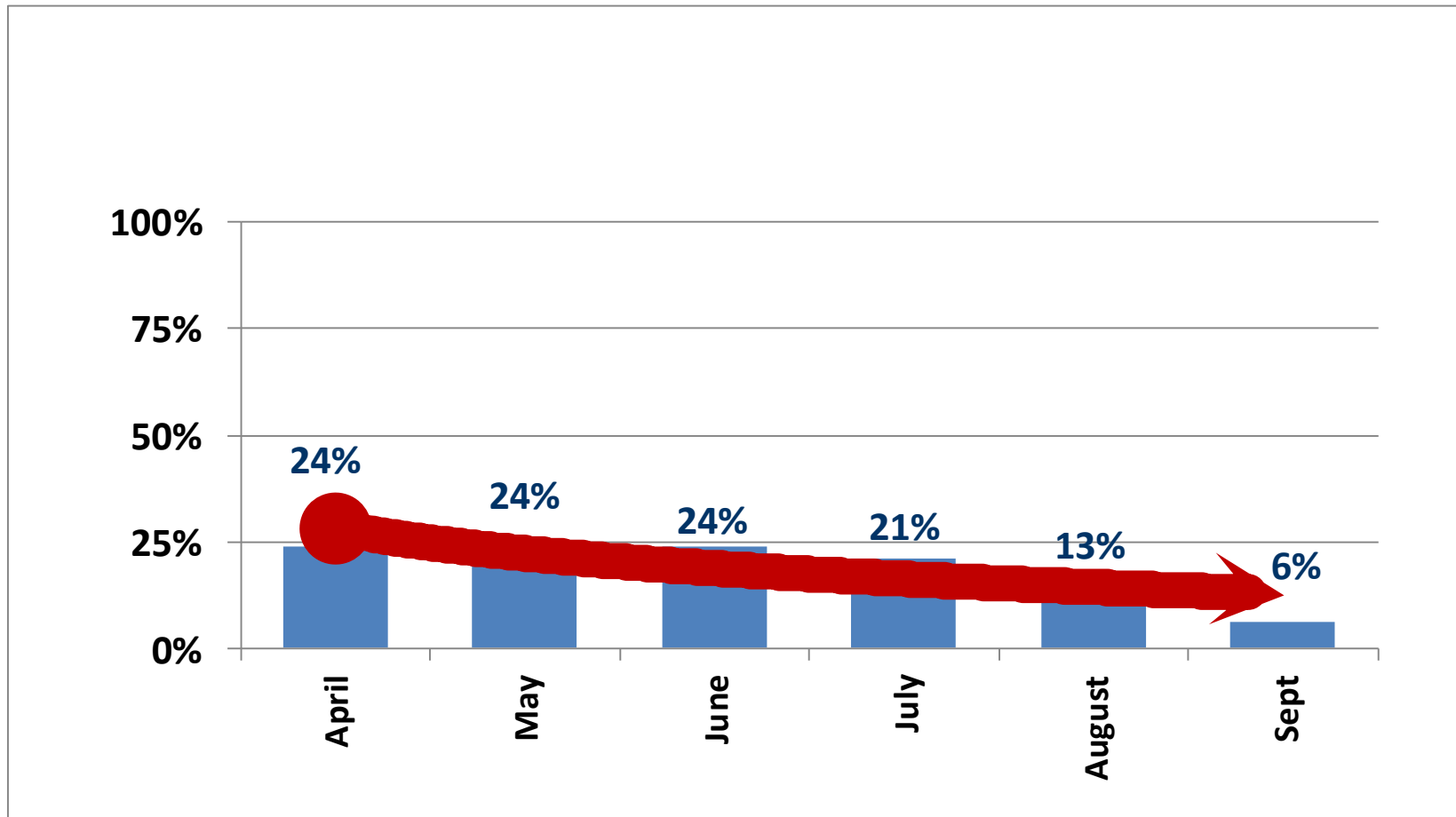
Month-wise Data Entry Status: Manipur

30%: Average Monthly Data Entry Manipur (Apr-Sep 2017)



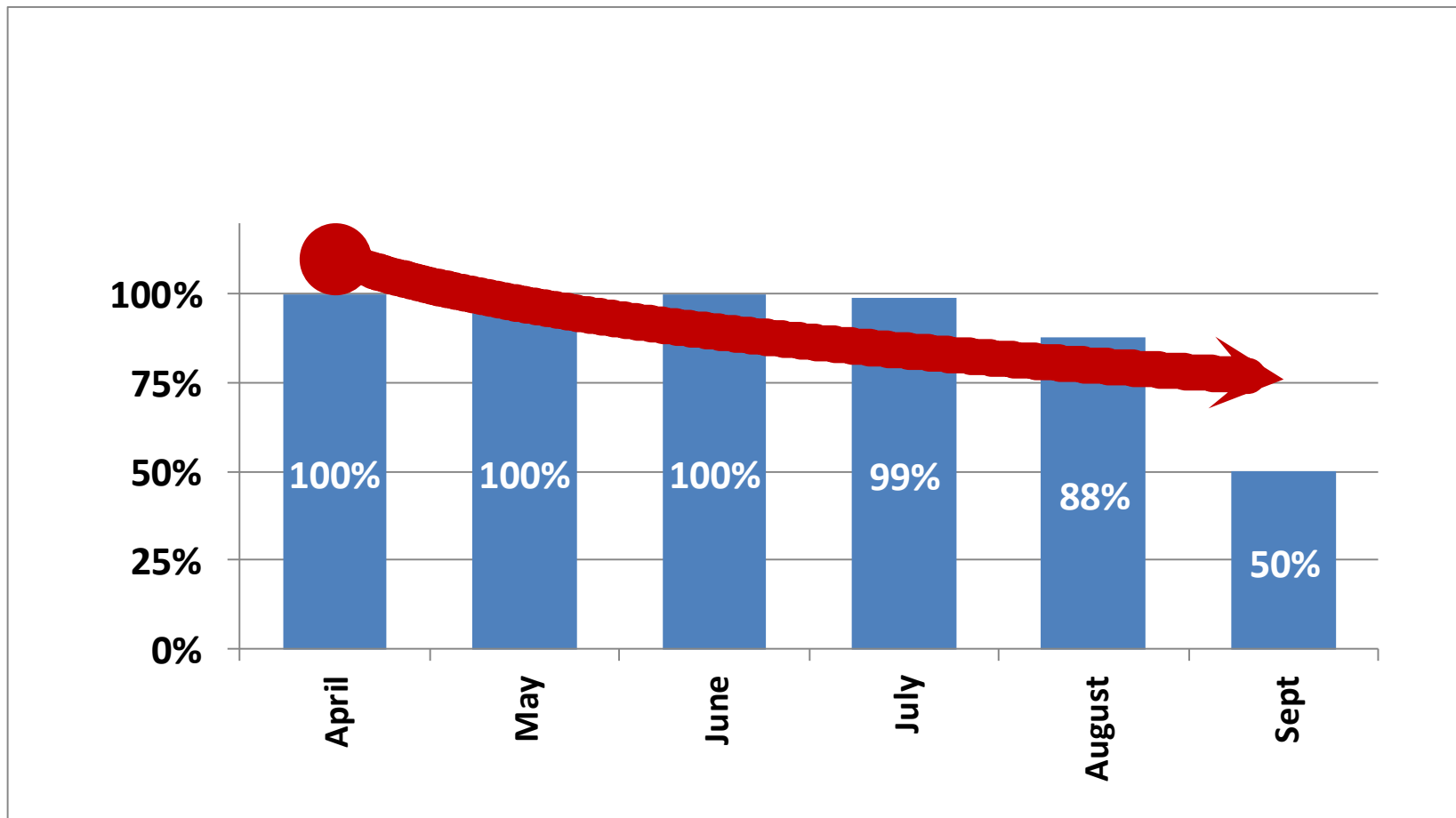
Month-wise Data Entry Status: Meghalaya

18%: Average Monthly Data Entry Meghalaya (Apr-Sep 2017)



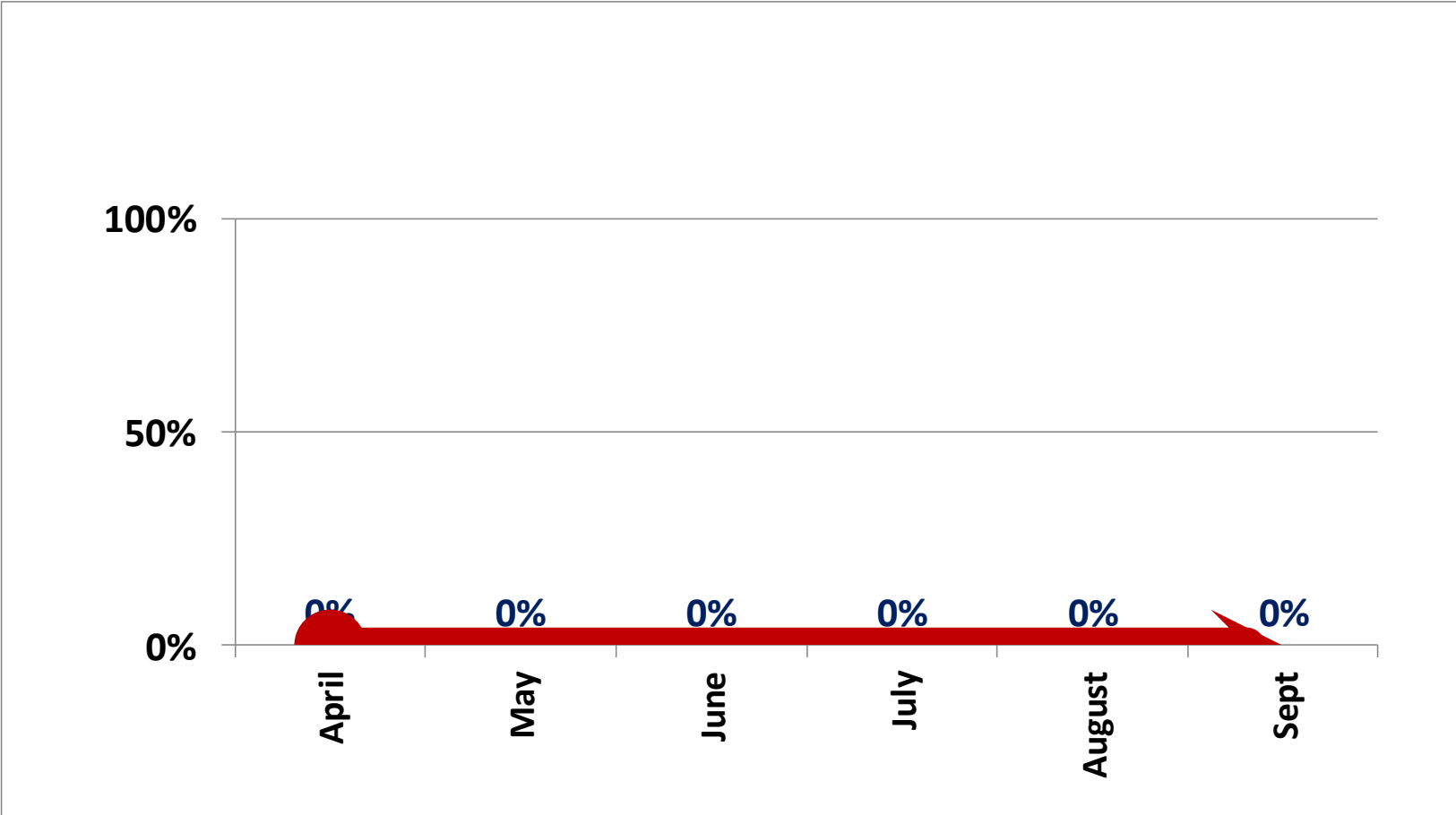
Month-wise Data Entry Status: Mizoram

89%: Average Monthly Data Entry Mizoram (Apr-Sep 2017)



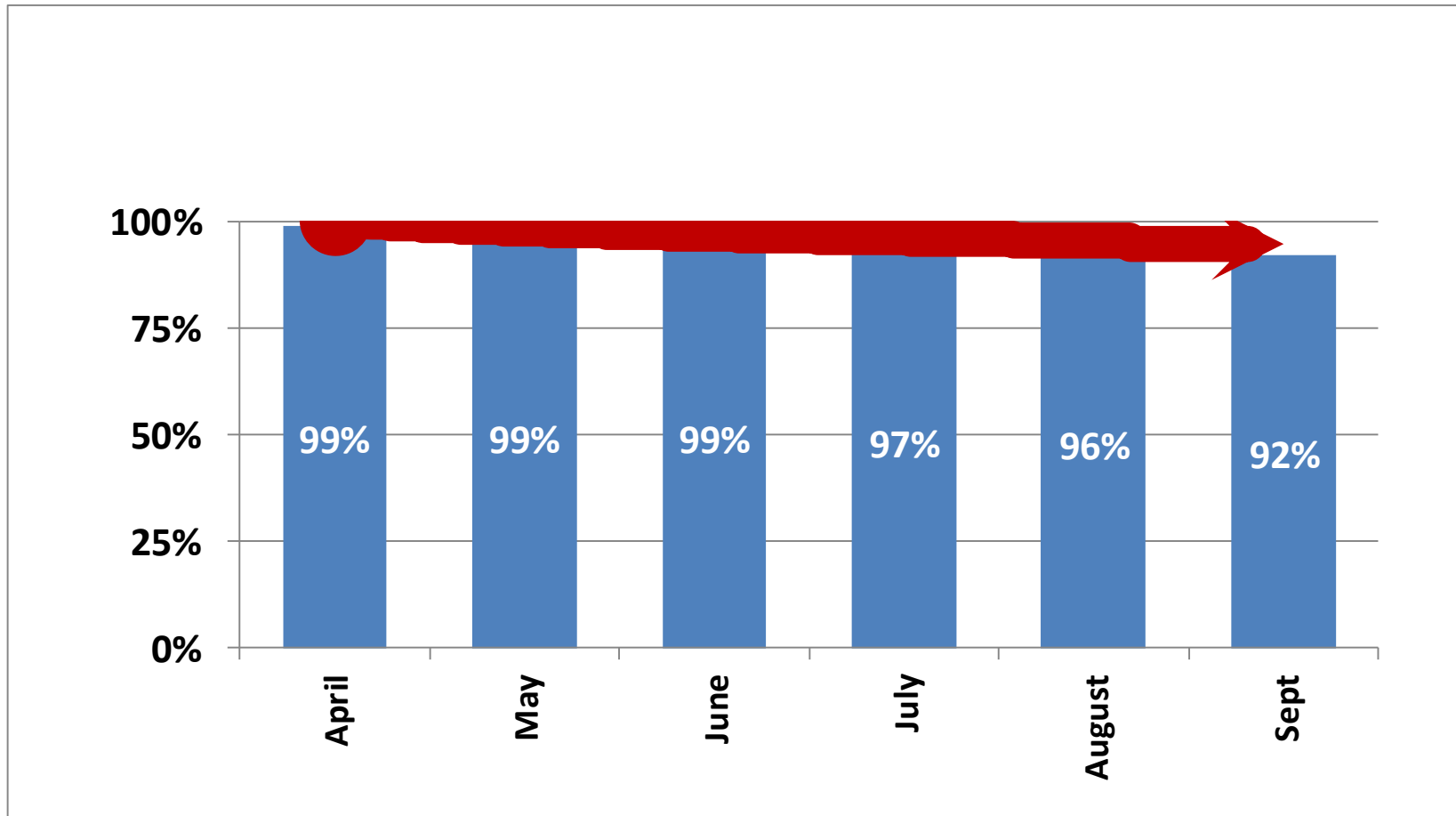
Month-wise Data Entry Status: Nagaland

0%: Average Monthly Data Entry Nagaland (Apr-Sep 2017)



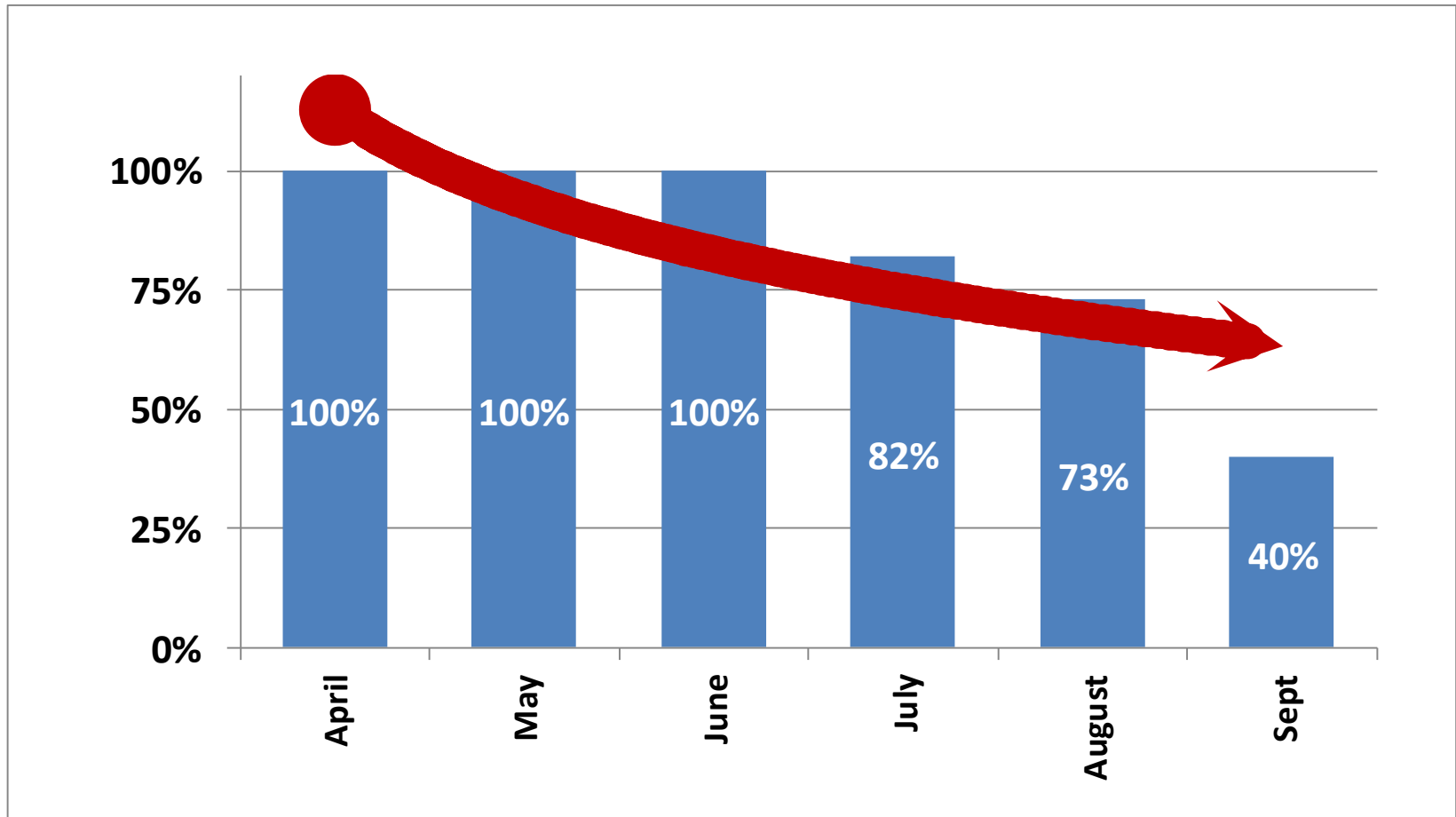
Month-wise Data Entry Status: Telangana

97%: Average Monthly Data Entry Telangana (Apr-Sep 2017)



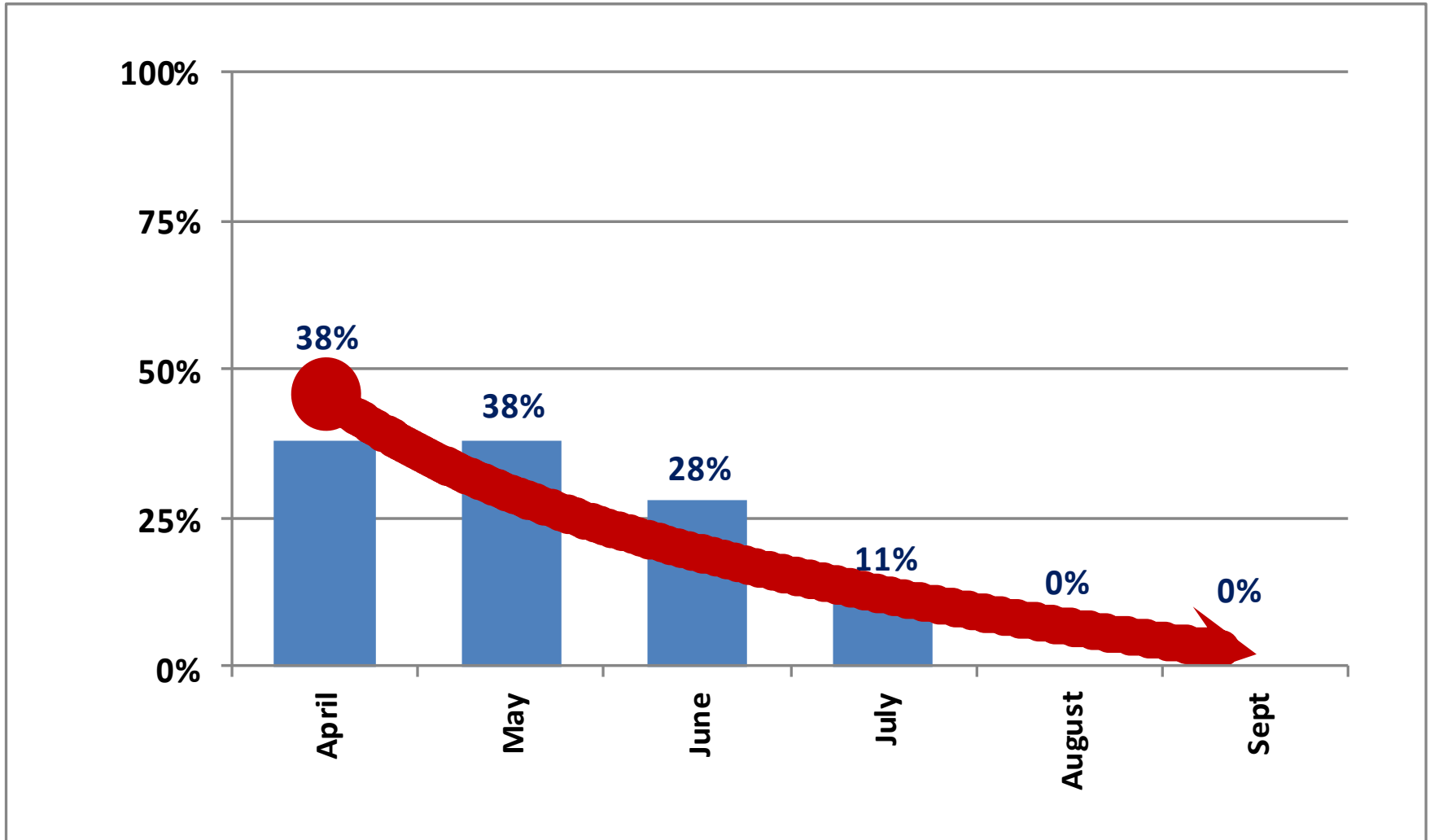
Month-wise Data Entry Status: Tripura

83%: Average Monthly Data Entry Tripura (Apr-Sep 2017)



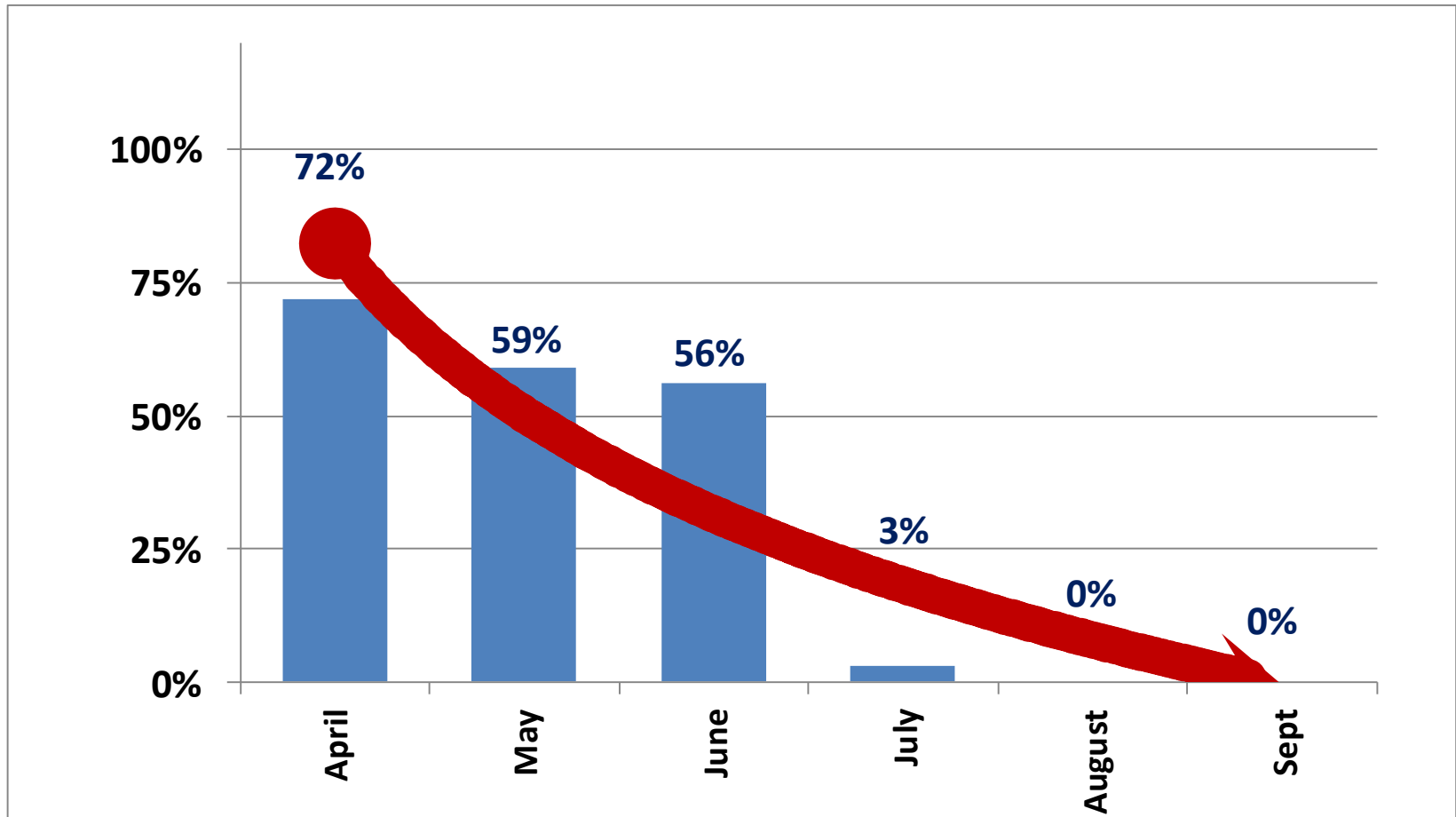
Month-wise Data Entry Status: Sikkim

19%: Average Monthly Data Entry Sikkim (Apr-Sep 2017)



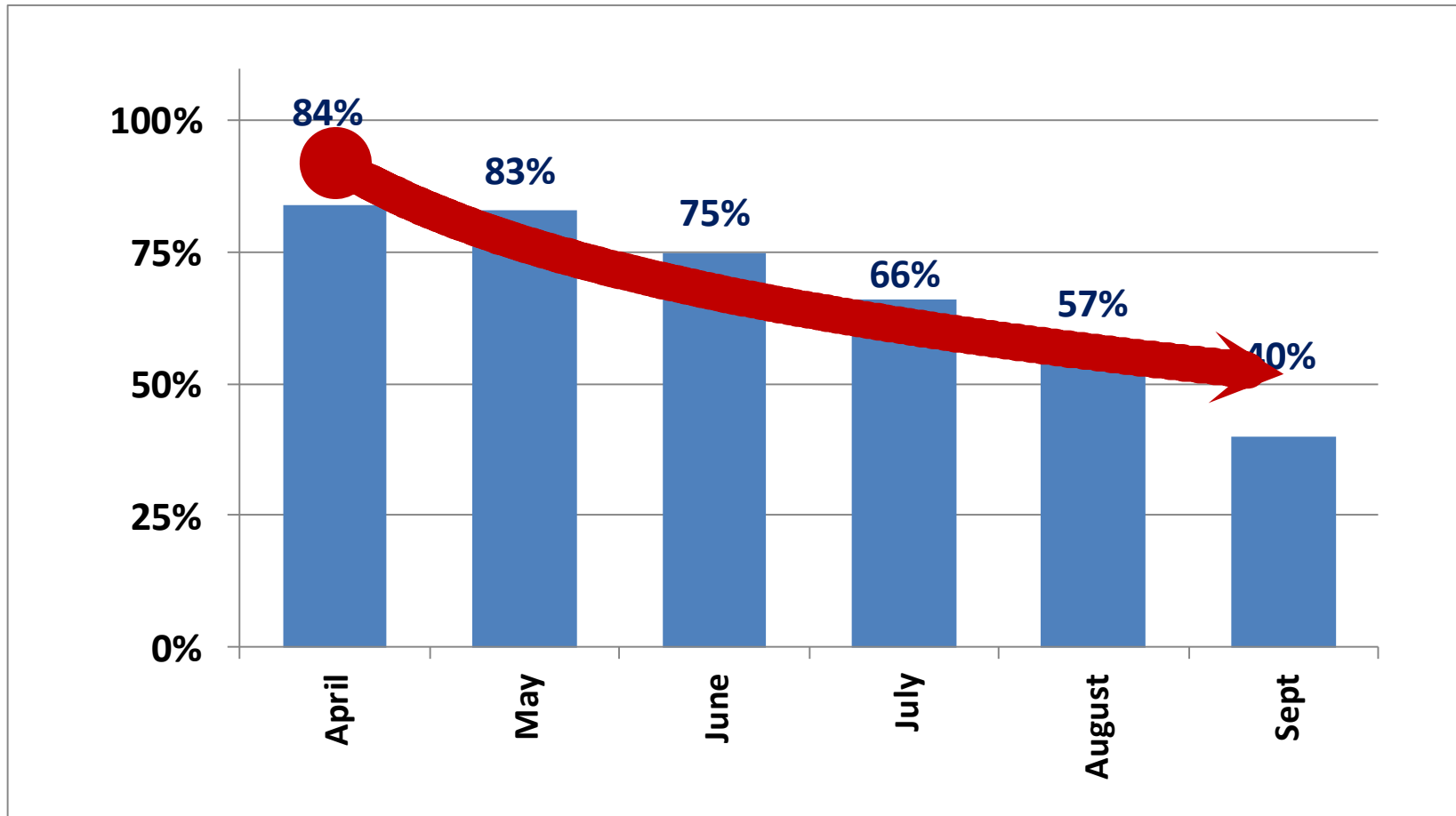
Month-wise Data Entry Status: Lakshadweep

32%: Average Monthly Data Entry Lakshadweep (Apr-Sep 2017)



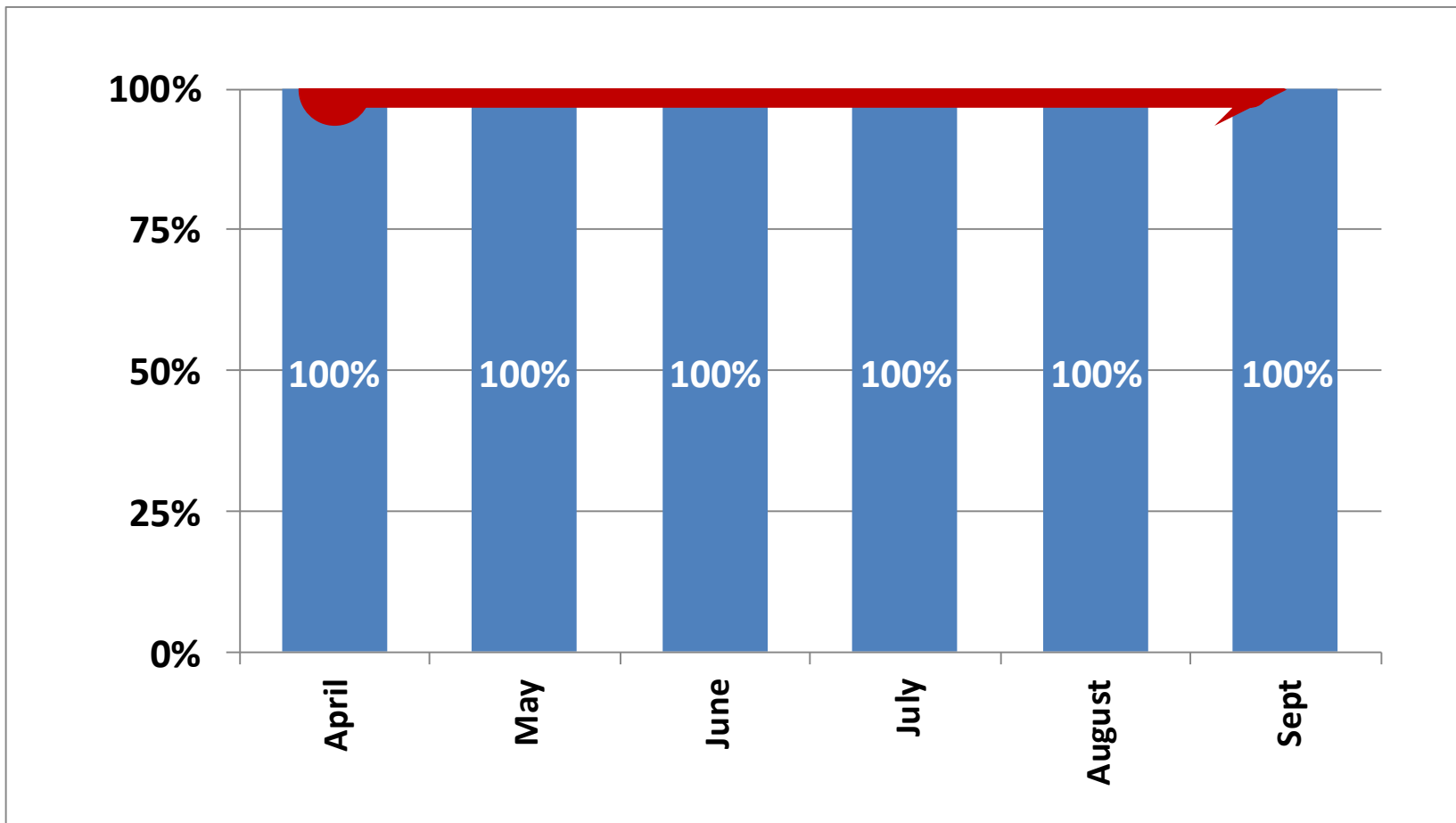
Month-wise Data Entry Status: Odisha

67%: Average Monthly Data Entry Odisha (Apr-Sep 2017)



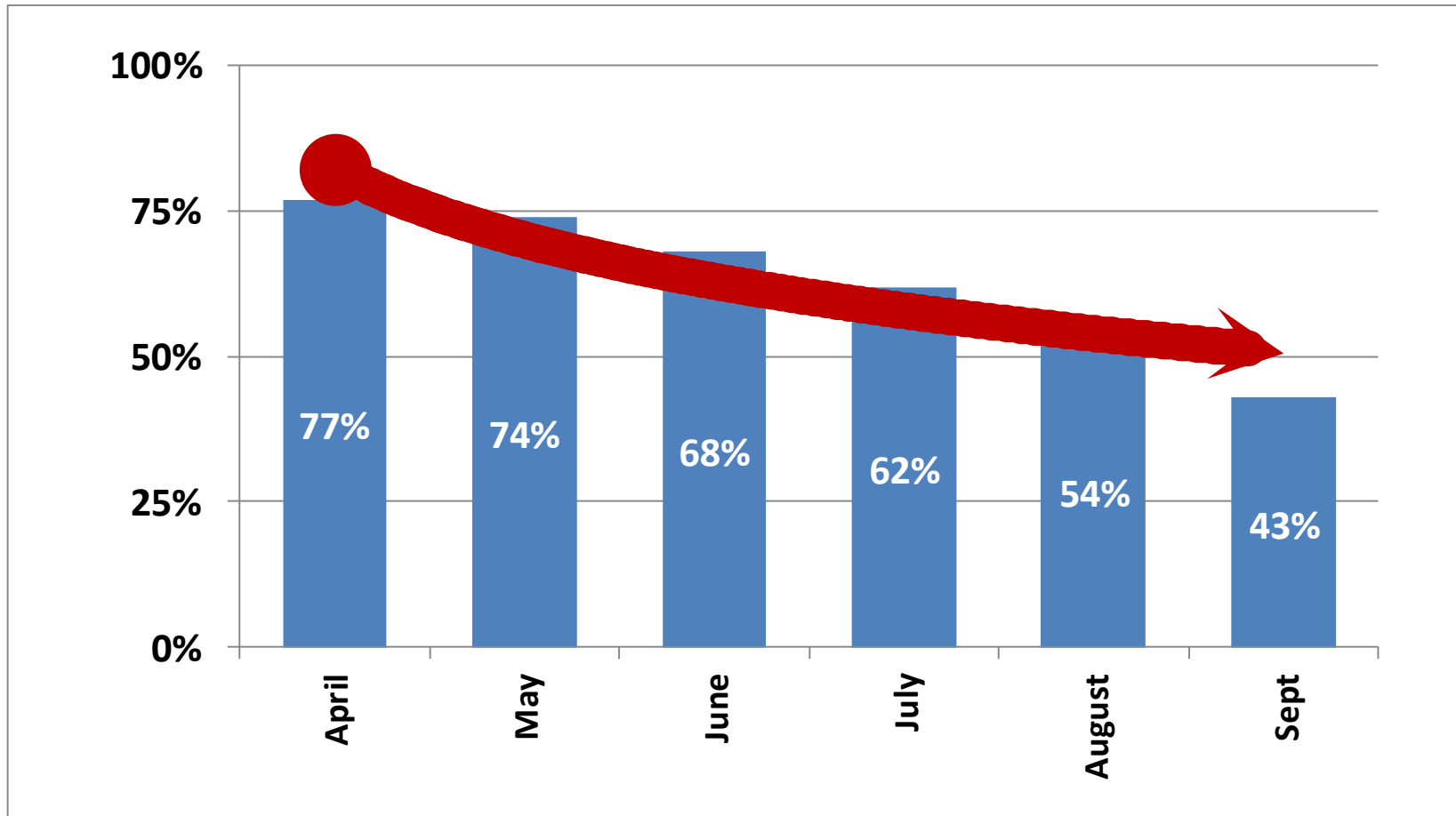
Month-wise Data Entry Status: Puducherry

100%: Average Monthly Data Entry Puducherry (Apr-Sep 2017)



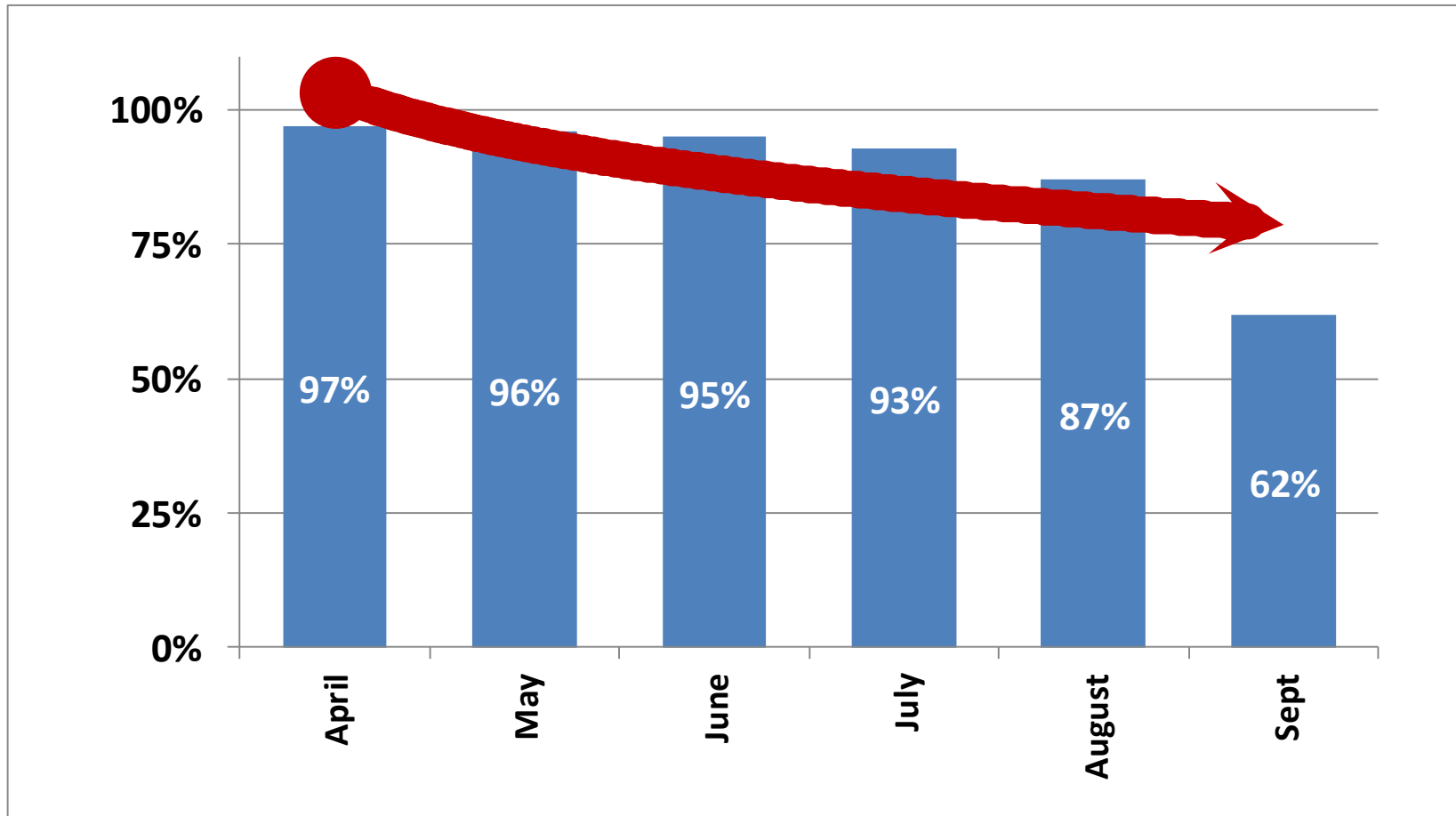
Month-wise Data Entry Status: Tamil Nadu

63%: Average Monthly Data Entry Tamil Nadu (Apr-Sep 2017)



Month-wise Data Entry Status: West Bengal

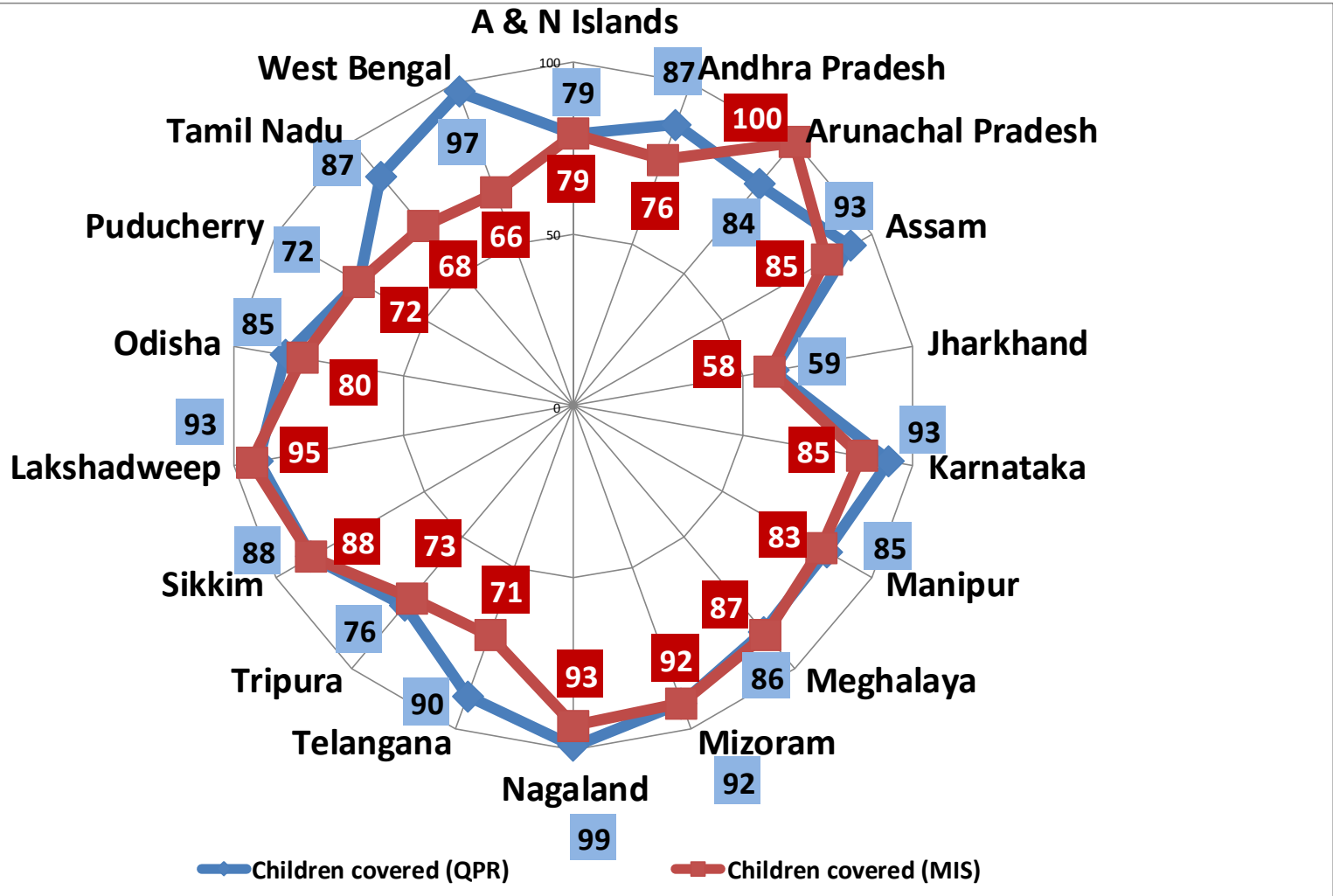
88%: Average Monthly Data Entry West Bengal (Apr-Sep 2017)



Comparison of Data: QPR v/s MIS (2016-17)

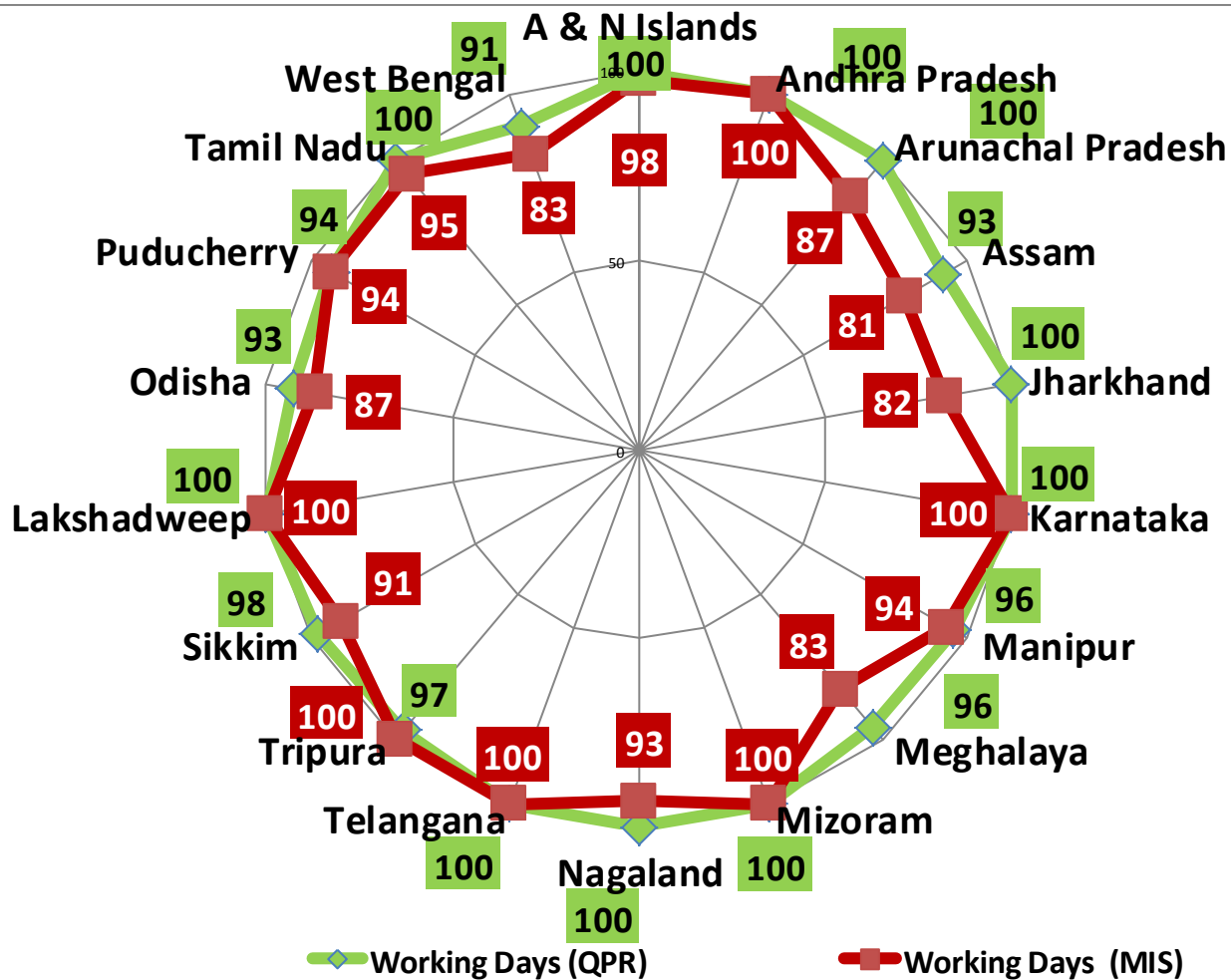


Coverage of Children



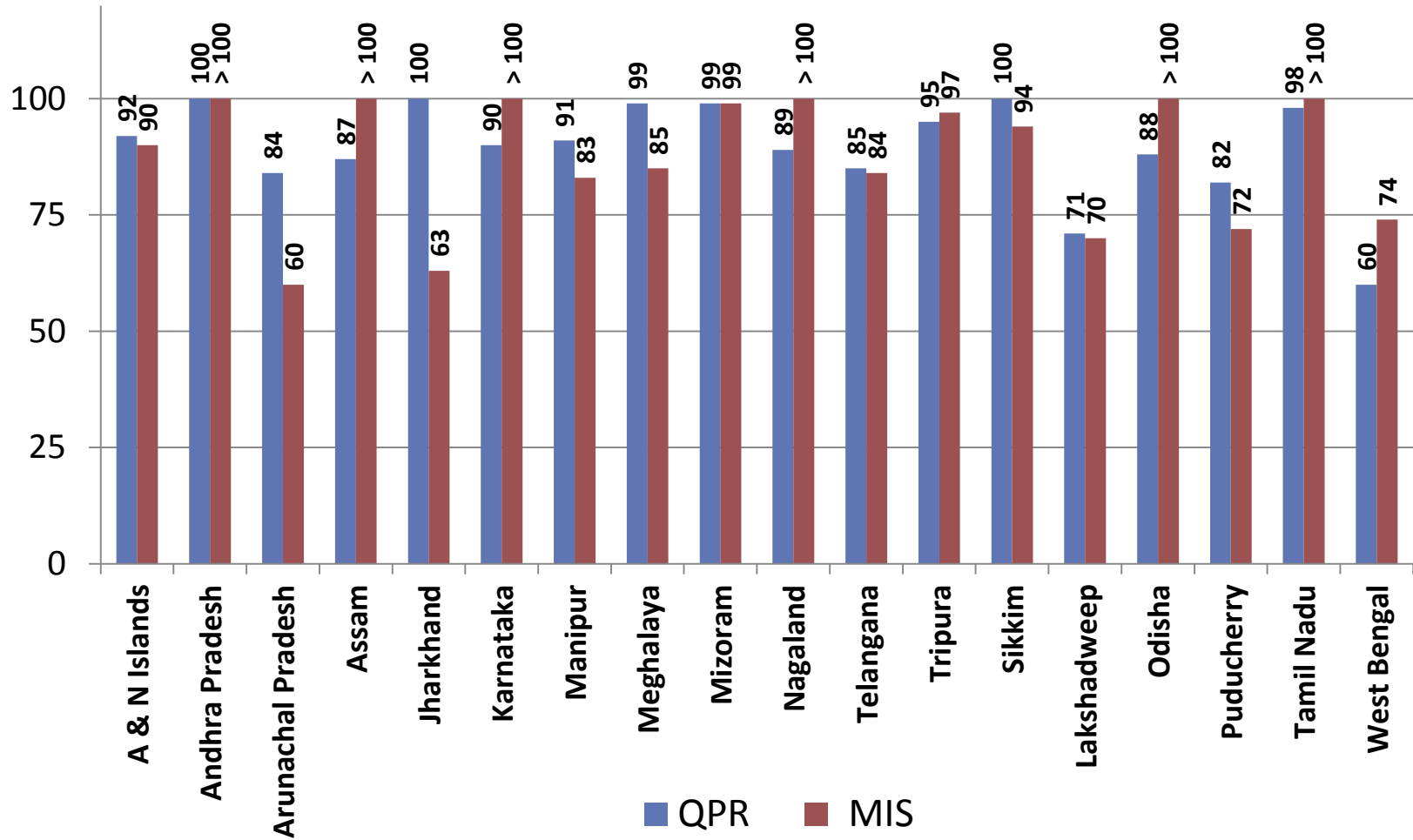
Figures denote % coverage of children against enrolment

Working Days



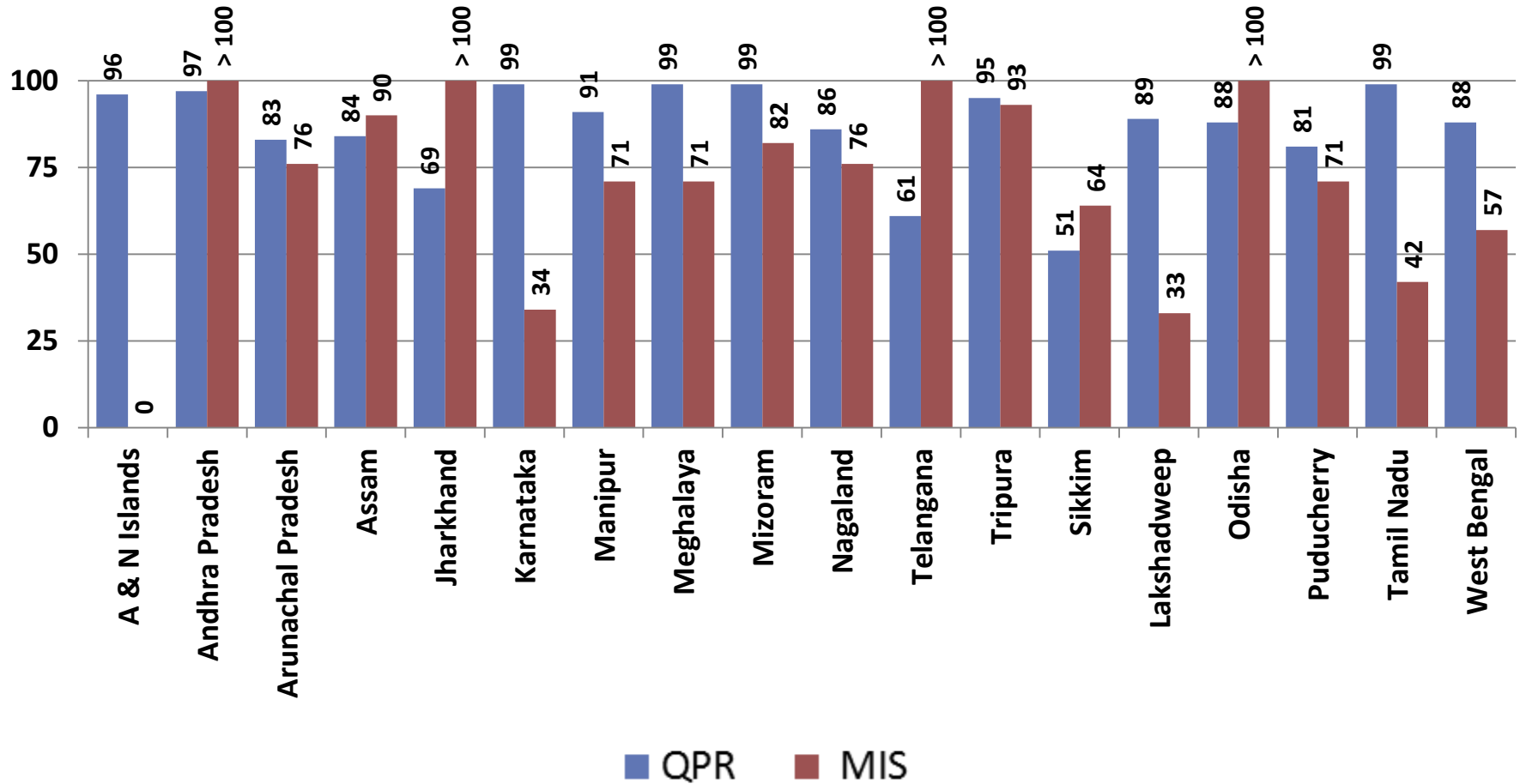
Figures denote % coverage of children against enrolment

Utilization of Food Grains



Figures denote % Food Grain Utilization

Utilization of Cooking Cost



Figures denote % Cooking Cost Utilization

*A meal to a Child is an offering to the
Divinity.*



Thank you